

**Phytoplankton composition in the Alg@line samples**  
SL 15.7.2015

**FM16 Gulf of Finland (Lat 59,37128, Lon 22,50107), 13.7.2015**

Dominant species:

*Aphanizomenon flos-aquae*

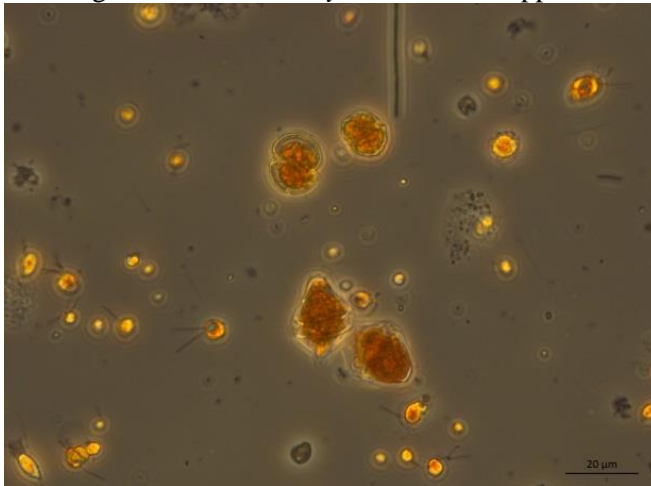
Oscillatoriales spp.

Peridinales cf.

*Heterocapsa triquetra*

Nanoflagellates, especially *Chrysochromulina* sensu lato

Temperature of the surface water was 15°C and chl-*a* concentration was 6,8 µg/L. *Aphanizomenon flos-aquae* and Oscillatoriales were quite numerous. Dinoflagellates *Heterocapsa triquetra* and Peridinales cf. (<15µm), and nanoflagellates such as *Chrysochromulina* spp. were common.



FM16 opening of the Gulf of Finland, 13.7.2015, 500x magnification: e.g. *Heterocapsa triquetra*, Peridinales cf., and nanoflagellates such as *Chrysochromulina* spp., *Pyramimonas* spp. and cryptomonadales. Photo: Sirpa Lehtinen, SYKE.

**FM22 Gulf of Finland (Lat 60,00168, Lon 25,08717), 13.7.2015**

Dominant species:

*Aphanizomenon flos-aquae*

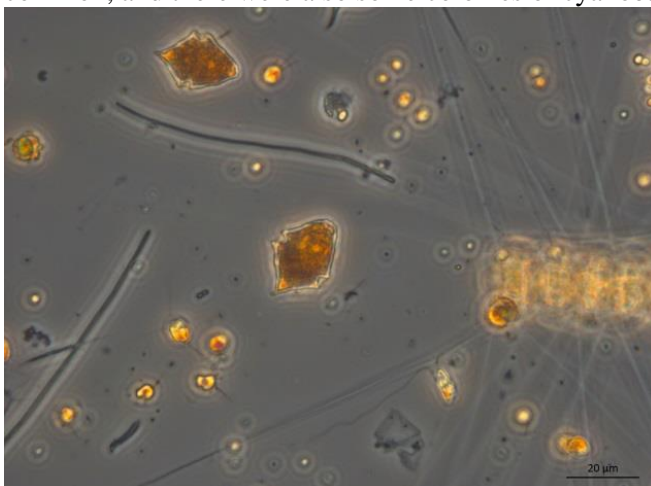
Oscillatoriales spp.

*Heterocapsa triquetra*

Nanoflagellates, especially *Chrysochromulina* sensu lato

*Ebria tripartita*

Temperature of the surface water was 14°C and chl-*a* concentration 6,5 µg/L. Cyanobacteria *Aphanizomenon flos-aquae* and Oscillatoriales spp., and dinoflagellate *Heterocapsa triquetra* were dominant. Nanoflagellates, especially the haptophyte *Chrysochromulina* spp. were numerous. Heterotrophic *Ebria tripartita* was quite common, and there were also some colonies of cyanobacterium *Snowella* spp.



FM22 Gulf of Finland, close to city of Helsinki 13.7.2015, 500x magnification: e.g. *Heterocapsa triquetra*, Oscillatoriales spp., nanoflagellates such as *Chrysochromulina* spp. and *Pseudopedinella* spp. Diatoms *Attheya* and *Chaetoceros* (out of focus) can be seen in the right corner. Photo: Sirpa Lehtinen, SYKE.