

Phytoplankton composition in the Alg@line samples
SL 22.7.2015

Utö (Lat 59,5655, Lon 21,36083) 20.7.2015

Dominant species:

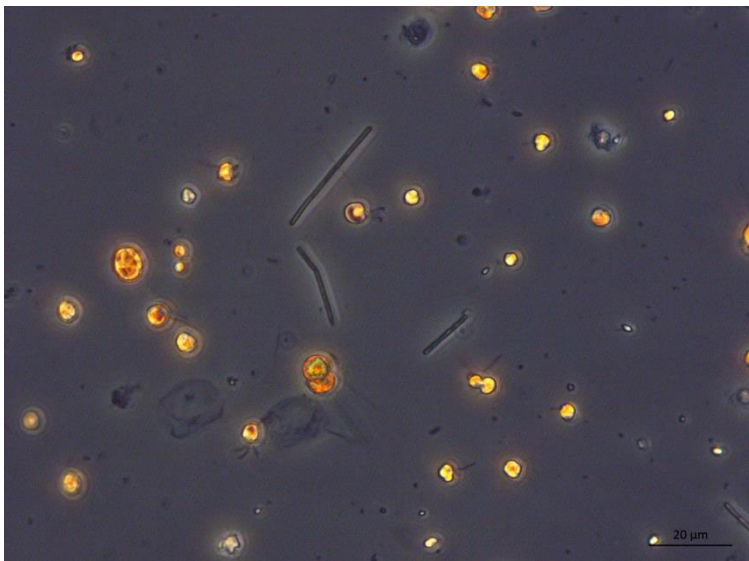
Oscillatoriales spp.

Nanoflagellates e.g. *Chrysochromulina* sensu lato, *Pyramimonas* spp.

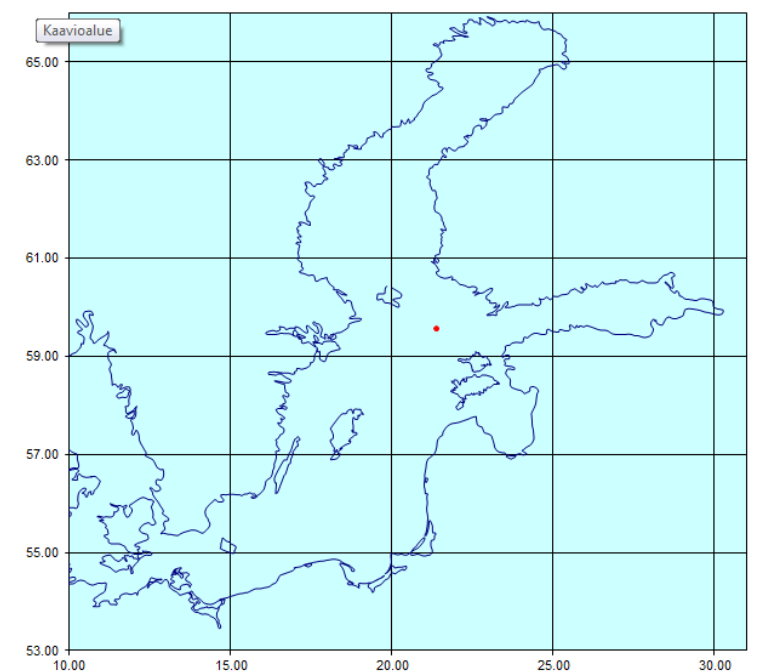
Heterocapsa triquetra

Aphanizomenon flos-aquae

Temperature of the surface water was 16°C and chl-*a* concentration was 4,4 µg/L. Filaments of non-N₂-fixing cyanobacterium Oscillatoriales spp., and nanoflagellates such as haptophyte *Chrysochromulina* spp. and prasinophyte *Pyramimonas* spp. were numerous. Dinoflagellate *Heterocapsa triquetra* and cyanobacterium *Aphanizomenon flos-aquae* were common, but not as numerous as during last week in the Gulf of Finland. Some filaments of cyanobacterium *Nodularia spumigena* were present. Interestingly, there were also some cells of the spring diatom *Skeletonema marinoi* and diatom *Aulacoseira* sp.



Utö 20.7.2015, 500x magnification: Filaments of cyanobacterium Oscillatoriales spp. and nanoflagellates such as *Pyramimonas* spp., *Chrysochromulina* spp., and *Pseudopedinella* spp. Photo: Sirpa Lehtinen, SYKE.



Alg@line station Utö is the red spot on the map.