

FM16 Gulf of Finland (Lat 59.28218, Lon 22.50103), 27.7.2015

Dominant species:

Aphanizomenon flos-aquae

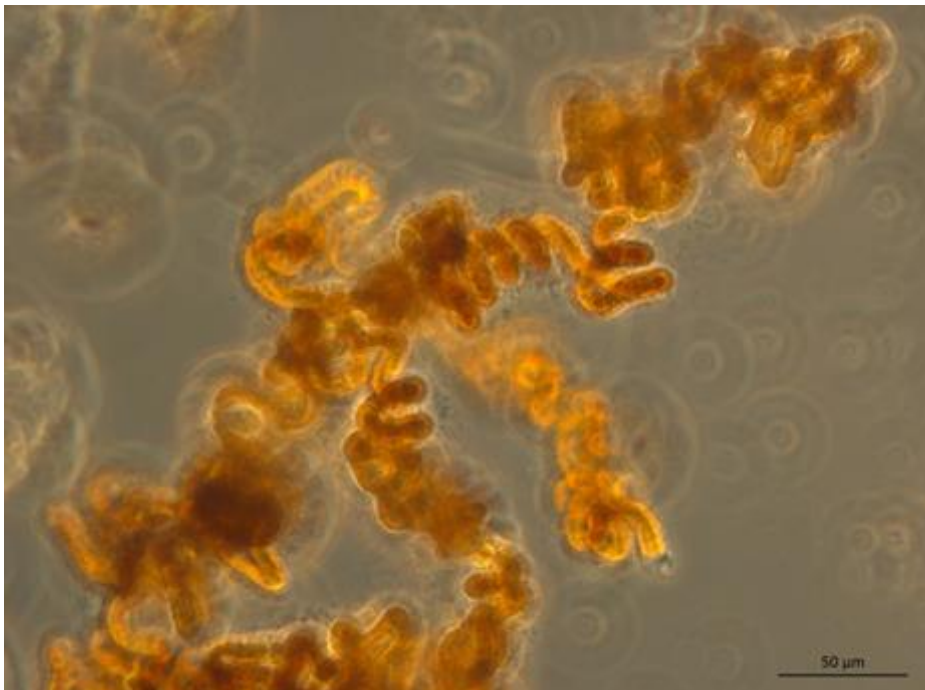
Nodularia spumigena

Oscillatoriales spp.

Nanoflagellates e.g. *Chrysochromulina* sensu lato

Heterocapsa triquetra

Temperature of the surface water was 16,5°C and chl-*a* concentration was 5,1 µg/L. The amount of cyanobacterium *Nodularia spumigena* has increased compared to the earlier weeks. Other dominant species were cyanobacteria *Aphanizomenon flos-aquae* and Oscillatoriales spp, nanoflagellates and dinoflagellate *Heterocapsa triquetra*.



FM16 western opening of the Gulf of Finland 27.7.2015, 250x magnification: cyanobacterium *Nodularia spumigena*. Photo: Sirpa Lehtinen, SYKE.

FM22 Gulf of Finland (Lat 60.00183, Lon 25.09505), 27.7.2015

Dominant species:

Aphanizomenon flos-aquae

Heterocapsa triquetra

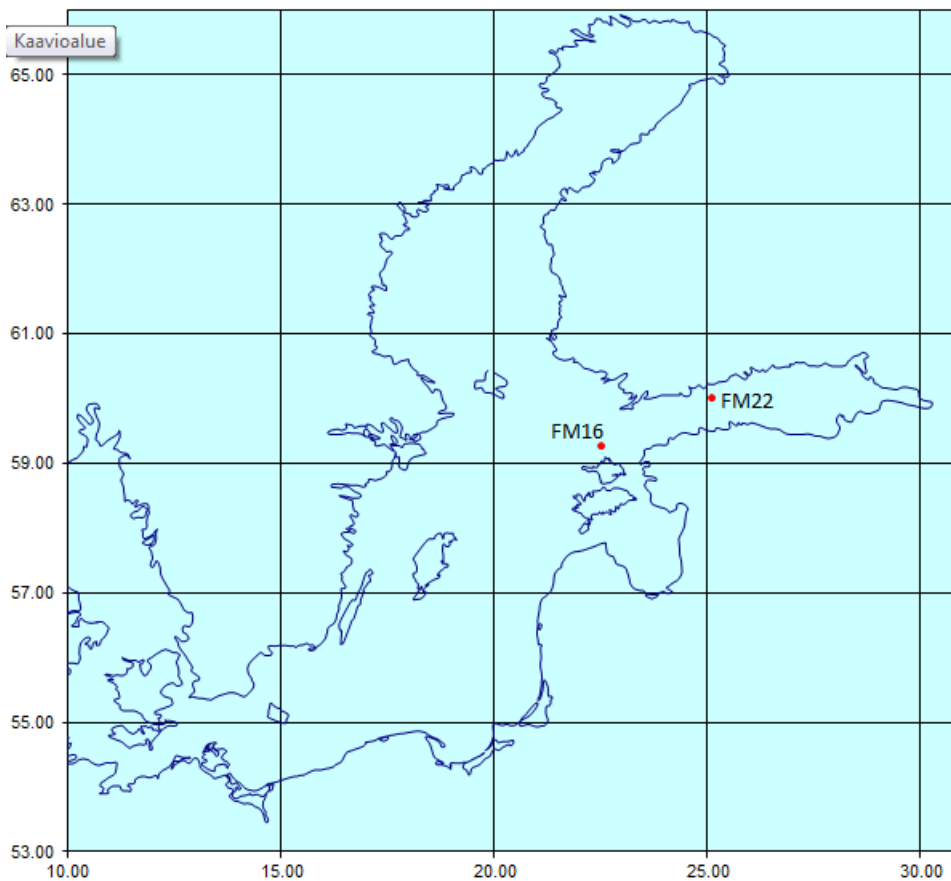
Oscillatoriales spp.

Dolichospermum spp.

Temperature of the surface water was 14,7°C and chl-*a* concentration was 6,7 µg/L. Cyanobacterium *Aphanizomenon flos-aquae* and dinoflagellate *Heterocapsa triquetra* were the dominant species. There were also some filaments of cyanobacteria *Dolichospermum* spp and Oscillatoriales, and diatoms such as *Chaetoceros wighamii*.



FM22 Gulf of Finland, close to city of Helsinki 27.7.2015, 250x magnification: e.g. cyanobacterium *Aphanizomenon flos-aquae*, dinoflagellate *Heterocapsa triquetra*, and diatoms *Chaetoceros wighamii* and *Skeletonema marinoi*. Photo: Sirpa Lehtinen, SYKE.



Alg@line stations FM16 and FM22 are shown as red spots on the map.