

## Phytoplankton dominant species in the Gulf of Finland on 31.8.2016

Sirpa Lehtinen, SYKE Marine Research Centre 1.9.2016

Phytoplankton biomass was quite low in the Alg@line sampling points FM16 and FM22 (see the map). Dinoflagellate *Prorocentrum minimum* was present in the opening of the Gulf of Finland (FM16), but it was not forming a bloom there. *P. minimum* is an invasive species which invaded the southern Baltic Sea in 1980's, and has been present in the Gulf of Finland since 1990's.

### Opening of the Gulf of Finland (FM16)

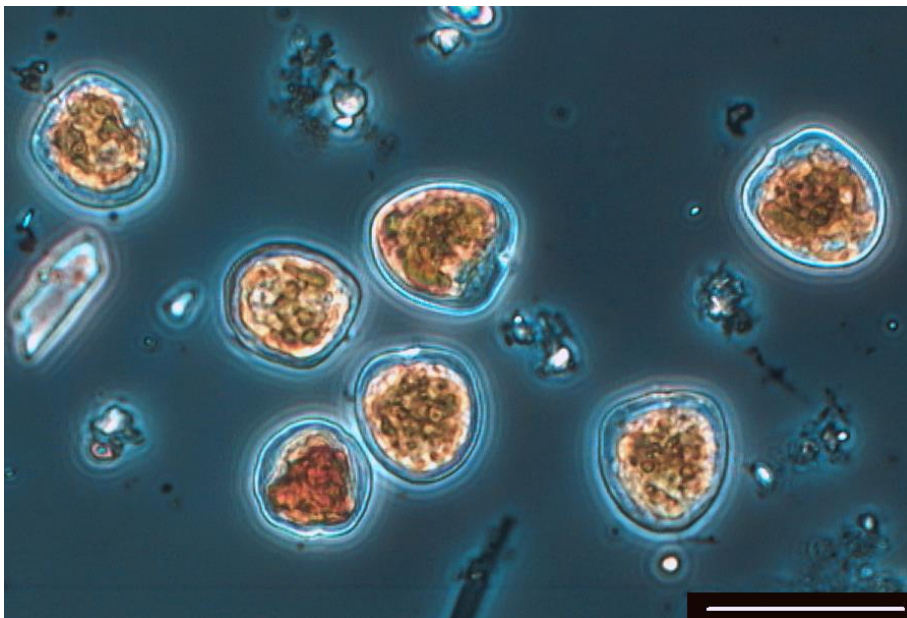
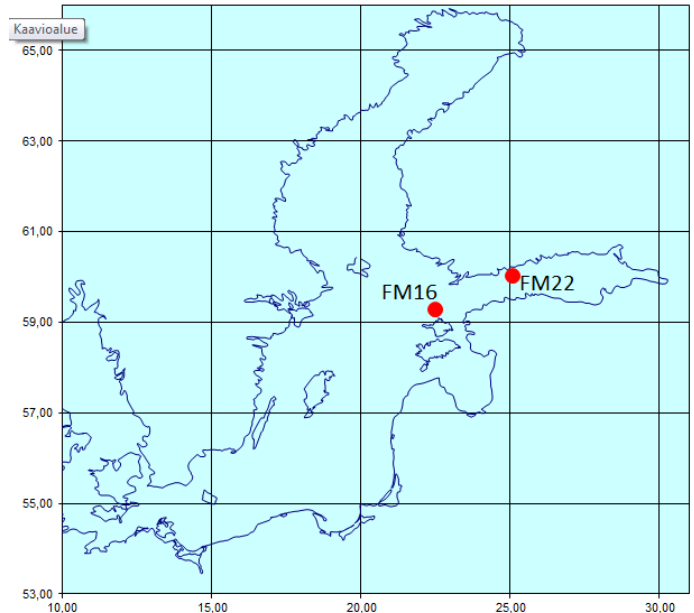
*Aphanizomenon flosaquae*  
Oscillatoriales spp.  
*Prorocentrum minimum*  
*Nodularia spumigena*  
*Heterocapsa triquetra*

Surface temperature 17,4°C, chl *a* 5,0 µg/l.

### Gulf of Finland, in front of Helsinki (FM22)

*Aphanizomenon flosaquae*  
Oscillatoriales spp.  
*Heterocapsa triquetra*  
*Snowella* spp.  
*Nodularia spumigena*

Surface temperature 15,6°C, chl *a* 6,3 µg/l.



The invasive dinoflagellate *Prorocentrum minimum* was present in the samples taken from Alg@line sampling point FM16. This photo has been taken earlier by Seija Hällfors.