

## Phytoplankton dominant species in the Gulf of Finland on 17.8.2016

Sirpa Lehtinen, SYKE Marine Research Centre 18.7.2016

Amount of phytoplankton has decreased in the Alg@line sampling points FM16 and FM22 (map below). The non-N<sub>2</sub>-fixing cyanobacterium *Oscillatoriales* spp. is very abundant especially in the sampling point FM16. *Nodularia spumigena* is almost absent.

### Opening of the Gulf of Finland (FM16)

*Oscillatoriales* spp.

*Aphanizomenon flosaquae*

*Phalacroma rotundatum*

*Dinophysis acuminata*

*Peridinales* spp.

*Snowella* spp.

Surface temperature 17,5°C, chl *a* 4,9 µg/l.

### Gulf of Finland, in front of Helsinki (FM22)

*Aphanizomenon flosaquae*

*Oscillatoriales* spp.

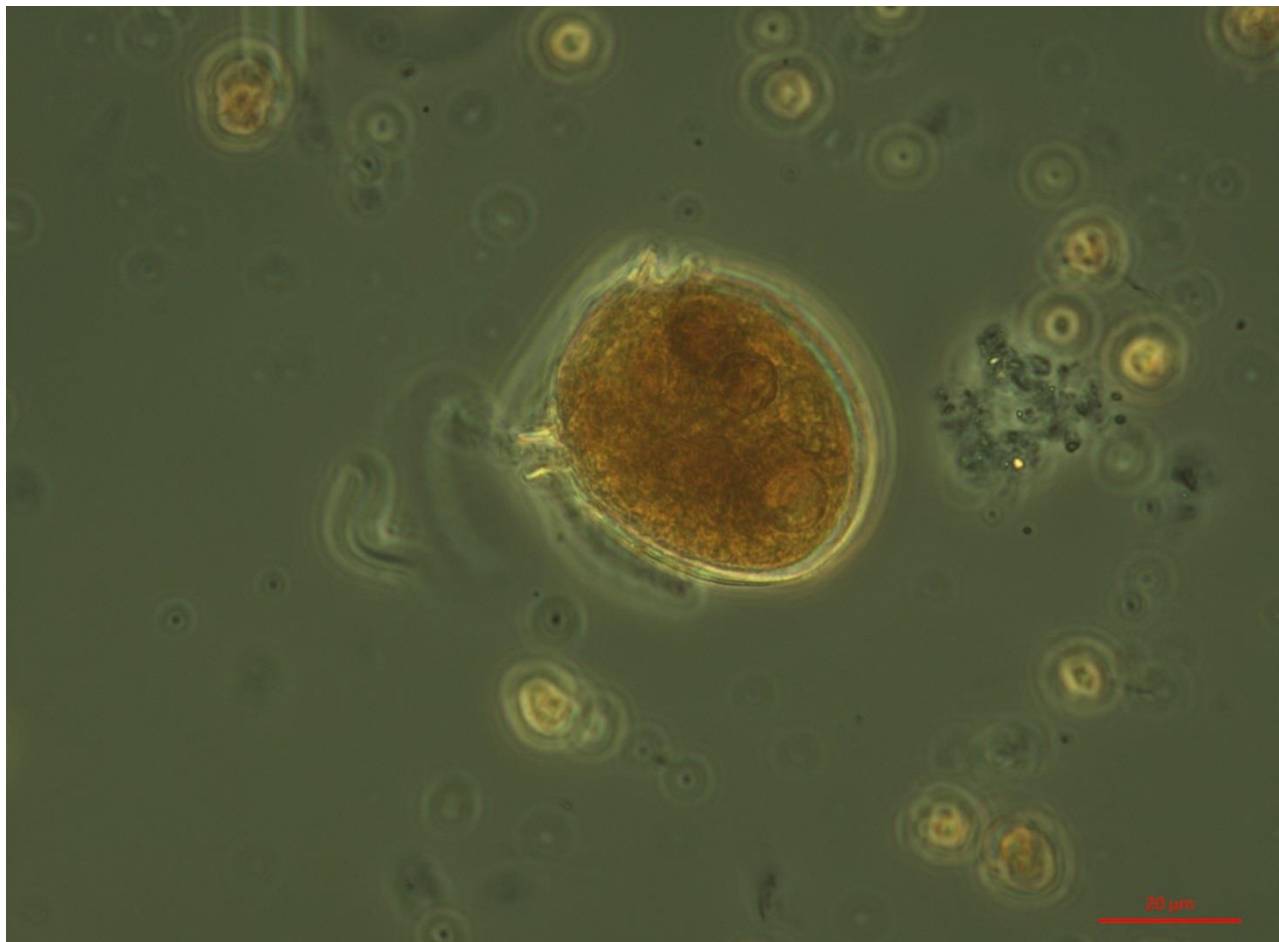
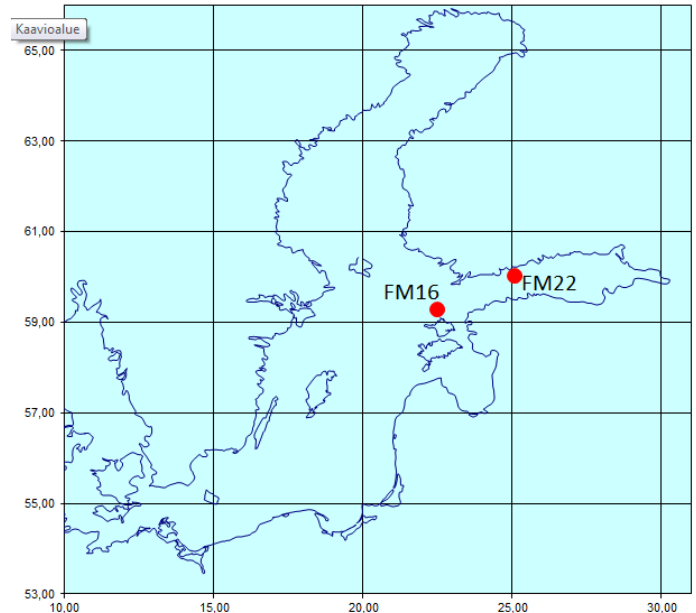
*Dinophysis acuminata*

*Heterocapsa triquetra*

*Peridinales* spp.

*Snowella* spp.

Surface temperature 17,1 °C, chl *a* 6,9 µg/l.



Heterotrophic dinoflagellate *Phalacroma rotundatum* (earlier called as *Dinophysis rotundata*) was quite common especially in the sampling point FM16, which is situated in the opening of the Gulf of Finland. Photo: Sirpa Lehtinen/SYKE Marine Research Centre.